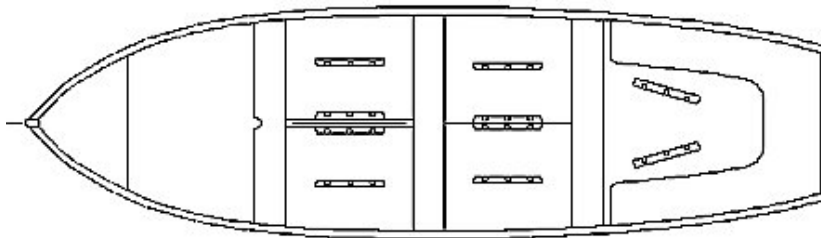
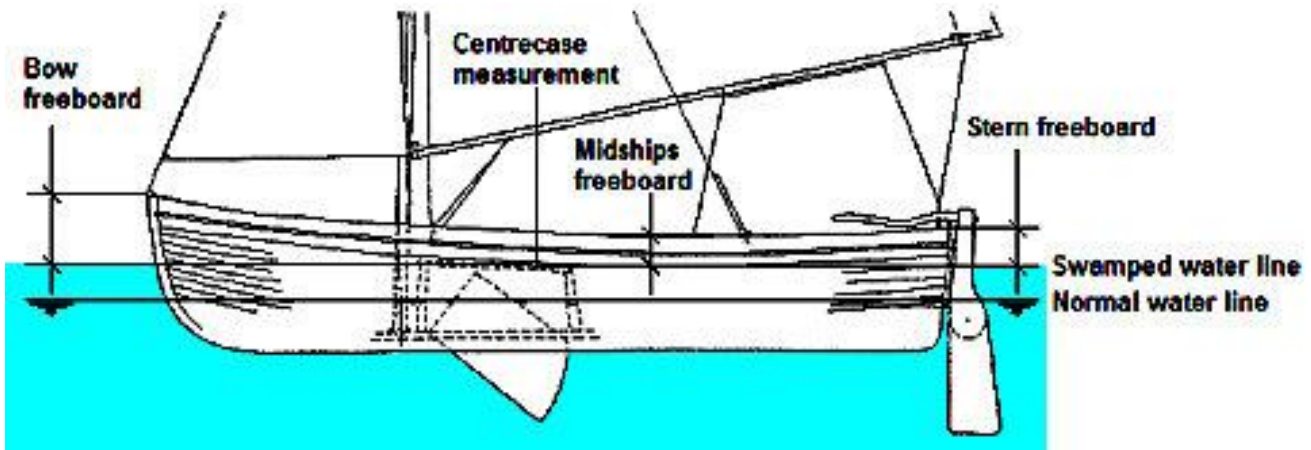


Group:.....

Zone:.....

Region:

Group Leader:.....	Boat Name:...	Pass/Fail:
Swamp test date: ..	Boat Number:	Recheck:
Date of survey:.....	Boat Type:	



Mark on the plans the position of all:

Buoyancy compartments
Inspection ports
Drain plugs

Buoyancy Compartments

Swamp Test Procedure

- The vessel is to be fully rigged with mast, boom and all sailing equipment including sails.
- Ensure all buoyancy compartments are dry.
- Ensure all buoyancy compartment inspection ports and drain plugs are closed tight.
- Remove the bottom plug and completely flood the vessel. This may be done by rolling the vessel over and pulling out on the main halyard using the mast as a lever to submerge the gunwale.
- With two youth members sitting in the vessel and the vessel upright and on even keel, measure the freeboard at bow, midships, stern and centrecase.
- Freeboard is the vertical measurement taken from the top surface of the gunwale to the waterline.
- Place a datum mark on the centrecase at the swamped waterline.
- Bail the vessel.
- Inspect all of the buoyancy compartments to ensure that they remained dry throughout the test.

There must be 50mm freeboard at the centre case or the centre case hole can be sealed when the vessel is fully swamped. All buoyancy compartments must remain dry.

Measurements

Measurements in millimetres

Bow freeboard:.....

Midships freeboard:.....

Stern freeboard:.....

Centrecase freeboard: .

Pass:

Fail:

Swamp tests may be undertaken by any adult Leader holding a charge certificate Grade E. The test must be completed annually between 1 April and 30 September and must be completed before a vessel can be issued a boat certificate. Present this completed form to the boat surveyor undertaking the boat survey.

Scout Association of New Zealand
PO Box 11 348
Wellington 6142
New Zealand
Phone +64 4 471 0720
Fax +64 4 471 0727
Web www.scouts.org.nz
Email info@scouts.org.nz
nwaa@scouts.org.nz

Surveyor:

Signature:

Print Name:

Name: